
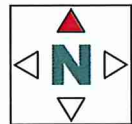


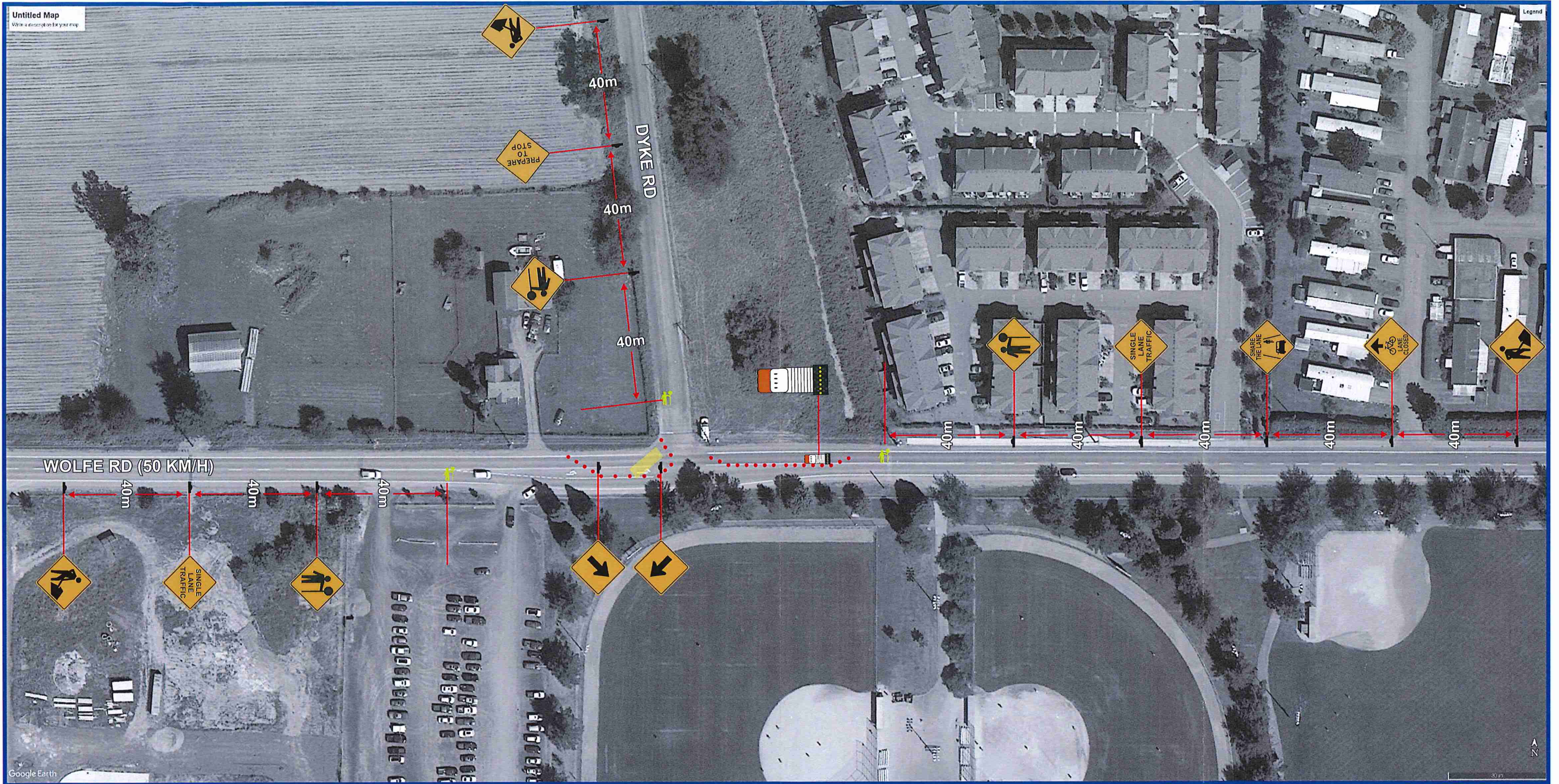
TRAFFIC CONTROL PLAN DATE OF LAST REVISION 2018-04-10	Contractor Name: TCP # Location:	
	Jakes Construction TCP 16 Wolfe Road @ Dyke Road	
	Job Description: Dates:	
	Pipe Tenching	
	Manual for Work on Roadways Traffic Control Figure Number	
	2015 Interim Edition	
	Contractor Contact: Phone: Email:	
	Steve Earle	604-701-3398 SEarle@jakesconstruction.ca
	Traffic Plan Contact: Phone: Email:	
	Genny Scott	778-860-7247 genny@streetwisetraffic.ca

LEGEND	
	TRAFFIC CONTROL PERSONNEL
	SIGN STAND (TRIPOD)
	SIGN STAND (WINDMASTER)
	SIGN FLAGS
	WORKZONE
	ACCESS RAMP
	TRAFFIC BARREL
	TUBULAR MARKER - TYPE D
	TRAFFIC CONTROL VEHICLE
	FLASHING ARROW BOARD (FAB)
	EXISTING BUS STOP
	RELOCATED BUS STOP

DRAWING SPECIFIC NOTES
• TCPs will assist pedestrians where necessary

GENERAL NOTES
• All traffic control shall conform to the MOTI Traffic Management Manual for Work on Roadways 2015
• Signs shown are representations only and the MOTI Catalogue of Standard Traffic Signs should be used for detailed sign design
• Dimensions shown are in meters and are the minimums except as otherwise indicated
• All permanent signage that will conflict with this site will be covered or removed while the works are in effect
• Active Work Zones and Hazards shall be delineated to protect workers and the travelling public
• Maximum distance between cone/delineator/barrel should be 10m
• Tubular markers and signs will be double based and well secured during windy conditions
• Distances may be adjusted due to urban block length
• These pages are best printed on a Tabloid (11x17) page size





TRAFFIC CONTROL PLAN
DATE OF LAST REVISION
2018-04-10



Contractor Name:	TCP #	Location:
Jakes Construction	TCP 14	Wolfe Road @ Dyke Road
Job Description:	Dates:	
Pipe Trenching		
Manual for Work on Roadways	Traffic Control Figure Number	
2015 Interim Edition		
Contractor Contact:	Phone:	Email:
Steve Earle	604-701-3398	SEarle@jakesconstruction.ca
Traffic Plan Contact:	Phone:	Email:
Genny Scott	778-860-7247	genny@streetwisetraffic.ca

LEGEND	
	TRAFFIC CONTROL PERSONNEL
	SIGN STAND (TRIPOD)
	SIGN STAND (WINDMASTER)
	SIGN FLAGS
	WORKZONE
	ACCESS RAMP
	TRAFFIC BARREL
	TUBULAR MARKER - TYPE D
	TRAFFIC CONTROL VEHICLE
	FLASHING ARROW BOARD (FAB)
	EXISTING BUS STOP
	RELOCATED BUS STOP

DRAWING SPECIFIC NOTES
• TCPs will assist pedestrians where necessary

- GENERAL NOTES**
- All traffic control shall conform to the MOTI Traffic Management Manual for Work on Roadways 2015
 - Signs shown are representations only and the MOTI Catalogue of Standard Traffic Signs should be used for detailed sign design
 - Dimensions shown are in meters and are the minimums except as otherwise indicated
 - All permanent signage that will conflict with this site will be covered or removed while the works are in effect
 - Active Work Zones and Hazards shall be delineated to protect workers and the travelling public
 - Maximum distance between cone/delineator/barrel should be 10m
 - Tubular markers and signs will be double based and well secured during windy conditions
 - Distances may be adjusted due to urban block length
 - These pages are best printed on a Tabloid (11x17) page size

